

Ouverture

Viola  Musical notation for Viola, measures 1-4. The staff is in 3/4 time with a key signature of one sharp (F#). The music begins with a repeat sign and a first ending bracket over the first two measures.

4

 Musical notation for Viola, measures 5-8. The music continues with a steady eighth-note pattern.

8

 Musical notation for Viola, measures 9-12. The music features a mix of eighth and sixteenth notes.

12

 Musical notation for Viola, measures 13-15. The music continues with eighth-note patterns.

15

 Musical notation for Viola, measures 16-18. The music features a mix of eighth and sixteenth notes.

18

 Musical notation for Viola, measures 19-20. The music concludes with a first ending bracket and a repeat sign.

21

 Musical notation for Viola, measures 21-33. The music begins with a second ending bracket and a repeat sign, followed by a sequence of eighth notes.

34

 Musical notation for Viola, measures 34-38. The music features a mix of eighth and sixteenth notes.

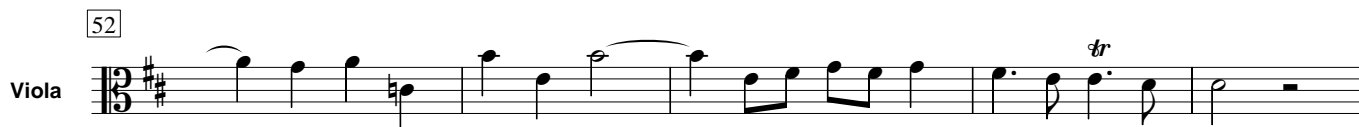
39

 Musical notation for Viola, measures 39-44. The music continues with eighth-note patterns.

45

 Musical notation for Viola, measures 45-48. The music concludes with a mix of eighth and sixteenth notes.

52 *tr*



57



67



72



80



86



91



98



105



110



115

Viola

174

Viola

179

184

189

193

199 **Lentement**

208

213

Rondeau

Viola

6

Sarabande

Viola 

6 

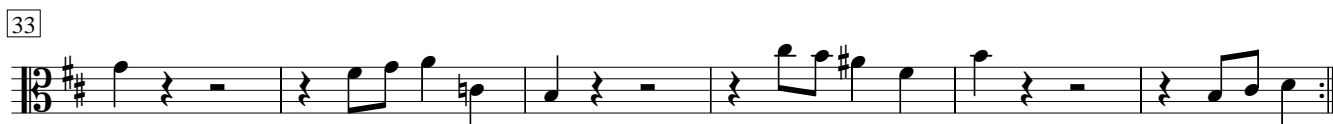
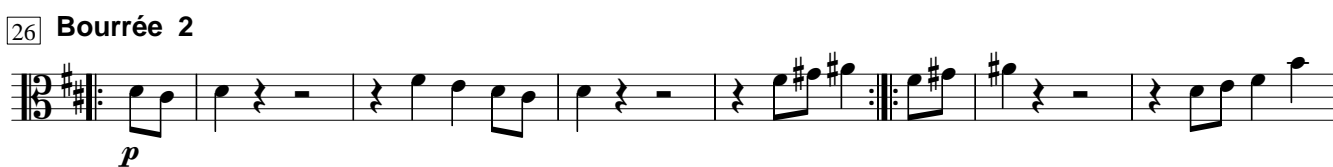
11 

17 

23 

28 

Bourrée 1



Bourrée 1 da capo

Polonaise

Viola



5



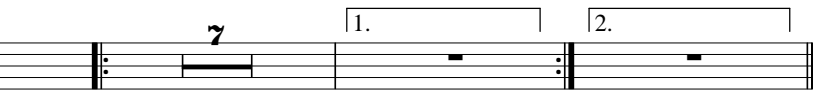
9



13


Double Viola tacet

Polonaise da capo



Menuett

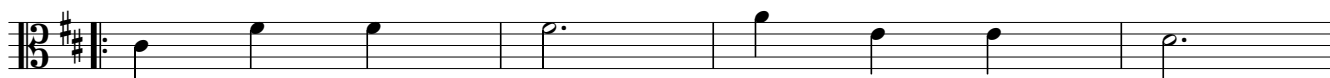
Viola



5



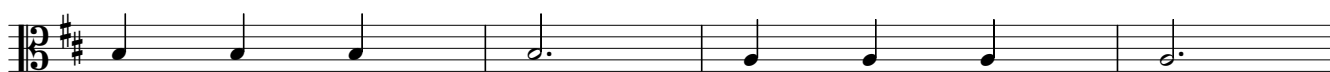
9



13



17



21



